

KENMEC

廣運機械



Corporate Information Session

▶ Reporter

TPEX 6125





01 Company profile and Financial information

PART 1

02 Company Products and Achievements

PART 2



CONTENTS




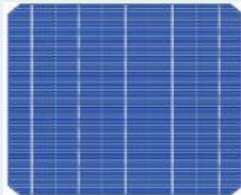

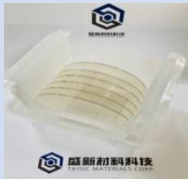




KENMEC

PART × ***01***

» **Company profile and Financial information**

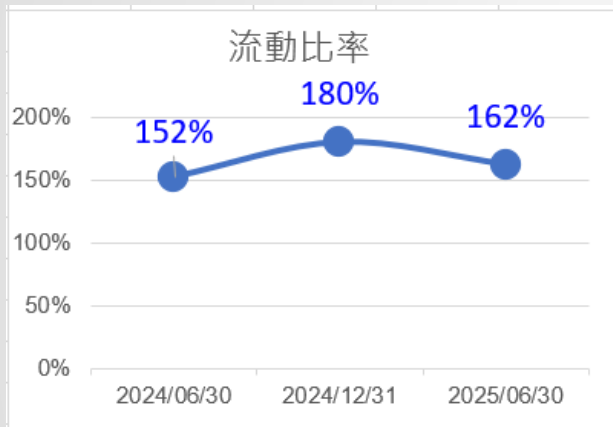
KENMEC Main individual companies in consolidated statements

Company / Code	Capital	Major Product
KENMEC 6125 	2.59Billion	Logistics automation equipment public construction 
TAINERGY 4934 	2.25Billion	TAINERGY-Solar Cell 
TAISIC 6930 	0.7Billion	Class III semiconductors Silicon carbide (SiC) crystal growth N type - conductive type: vehicle mounted Si type-semi-insulated type: 5G, aerospace, national defense 
KENTEC 	0.58Billion	Electronic OEM AI cooling solution 

Consolidated Balance Sheet

Unit: NT\$ million

Contract liabilities of 0.731 billion yuan ◦



Accounting Subject	2025/6/30	2024/12/31	2024/6/30
Current assets	4,718	5,246	5,005
Non-current assets	6,497	6,662	6,936
Total assets	11,215	11,908	11,941
Current liabilities	2,919	2,915	3,285
Non-current liabilities	2,569	3,162	3,221
Total liabilities	5,488	6,076	6,506
Capital stock	2,590	2,590	2,581
Additional paid-in capital	1,250	1,416	616
Retained earnings	763	769	840
Other equity	(321)	(226)	(237)
Total equity attributable to owners of parent	4,283	4,549	3,800
Total Shareholders' equity (Including minority interest)	5,727	5,831	5,435
Liabilities Ratio	49%	51%	54%
Current Ratio	162%	180%	152%
Net Asset Value Per Share	16.53	17.56	15.26

Consolidated Income Statement

Unit: NT\$ million

Accounting Subject	2025H1		2024H1	
Net operating revenue	1,331	100%	1,377	100%
Gross profit	262	20%	190	16%
Net operating loss	(259)	-19%	(390)	-28%
Net loss before tax	(172)	-13%	(204)	-15%
Net profit after tax	(175)	-13%	(202)	-15%
Net income after tax to Shareholders of Parent Company	(11)		(65)	
Net income after tax per share(NT\$)	-0.04		-0.26	

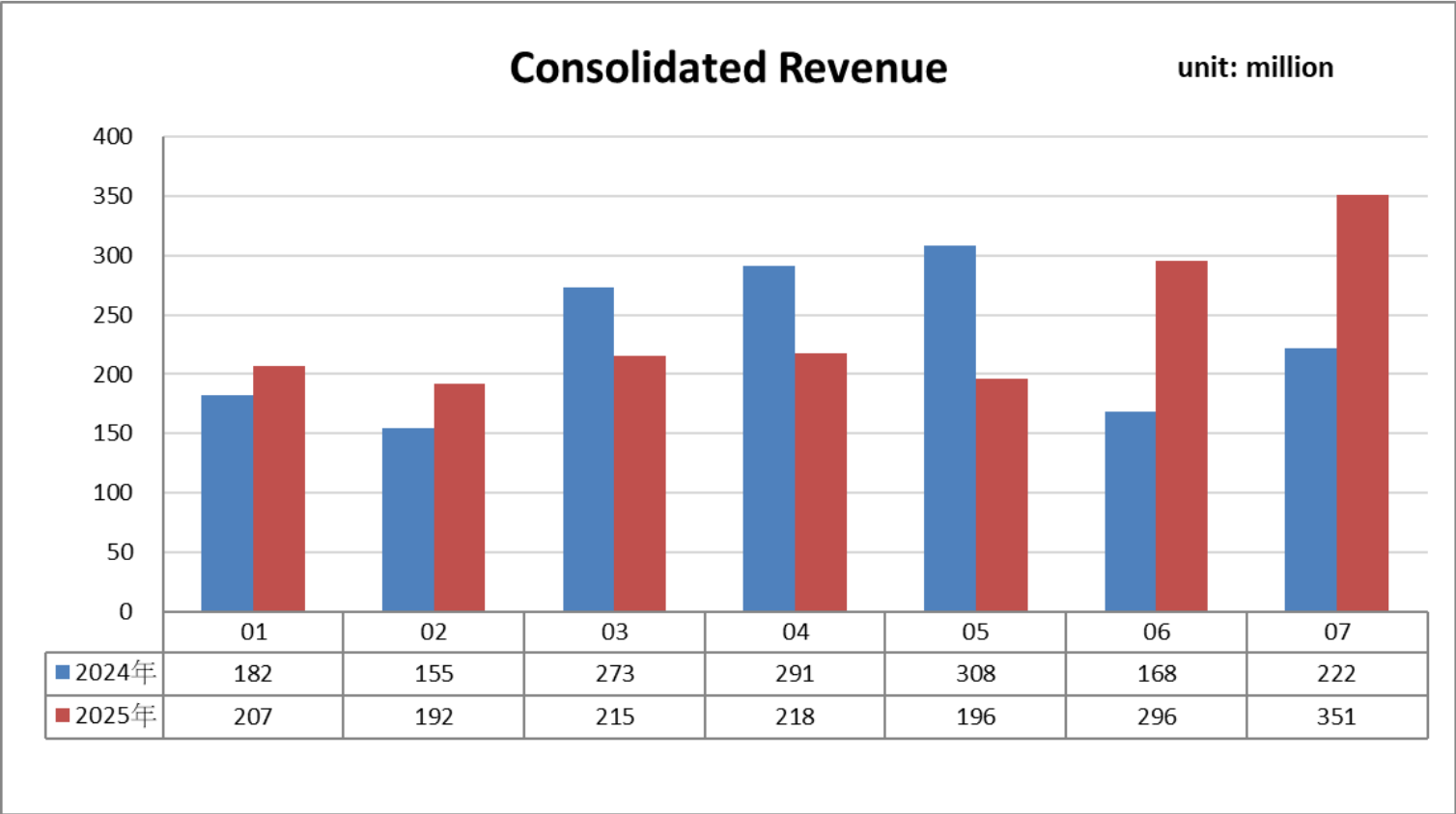
Consolidated Statement of Cash Flow

Unit: NT\$ million

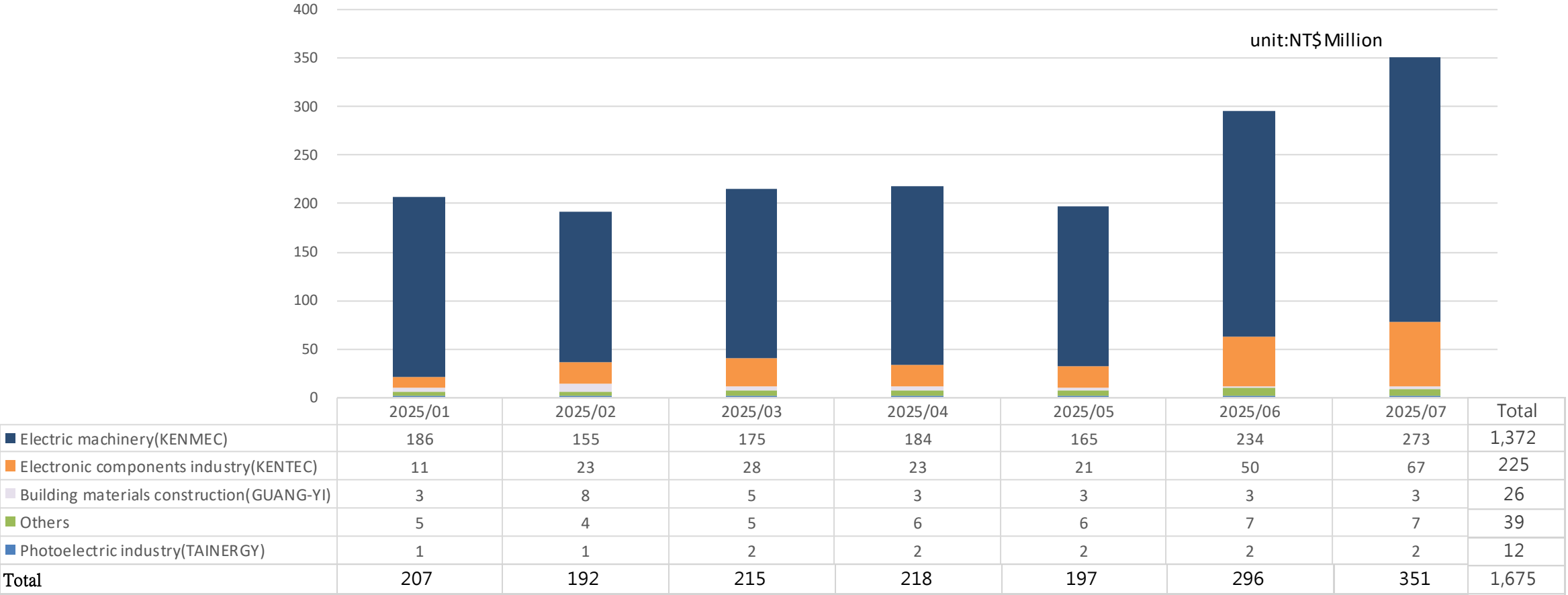
Accounting Subject	2025H1	Year2024	2024H1
Cash flow from operating activities	36	(197)	(99)
Cash flows from investing activities	(62)	143	465
Cash flow from financing activities	(306)	732	502
The impact of exchange rate changes on cash and cash equivalents	(11)	11	3
Net increase (decrease) in cash and cash equivalents	(343)	689	871
Opening cash and cash equivalent balances	2,380	1,690	1,690
Closing cash and equivalent cash balances	2,037	2,380	2,561

Consolidated Revenue from January to July 2025

year and month	Revenue(Million yuan)			Cumulative revenue(Million yuan)		
	Monthly revenue	Monthly revenue last year	Growth rate%	Cumulative revenue this year	Cumulative revenue last year	Growth rate%
202507	351	222	57.95%	1,675	1,599	4.75%



KENMEC Consolidated revenue from January to July 2025-By industry



KENMEC

PART × ***02***

» **Company Products and Achievements**



KENMEC
廣運機械

- ① Automation Systems
- ② Generative AI Services & Applications
- ③ OHT/AMR/ Compound Semiconductor Equipment

THUNTECH
霆光科技股份有限公司

- ① Charging Plug
- ② Charging Module
- ③ Intelligent Industrial Control Systems

Kentec

- ① OEM/ODM
- ② Liquid Cooling Solutions
- ③ Electronics / Professional OEM Services

TAI VISION
永曜光學股份有限公司

- ① Professional Contact Lenses
- ② Silicone Hydrogel Technology
- ③ High-Quality Colored & Clear Lenses

TAI ENERGY

- ① Solar Cells
- ② System Integration
- ③ Strategic Investments

盛新材料科技
TAISIC MATERIALS CORP.

- ① SiC Substrates (Wafers)
- ② Semi-Insulating / N-Type
- ③ In-house grown SiC substrates

群豐欣業
Chief Global Logistics

- ① Intelligent Automated Warehouse
- ② Professional 3PL
- ③ LogisticsIntelligent WMS

**KENMEC
GROUP**

The Kentec logo is centered within a white circle. It features a blue square icon to the left of the word "Kentec" in a bold, dark grey sans-serif font, followed by a small blue dot.

Kentec.

ODM/OEM/EMS

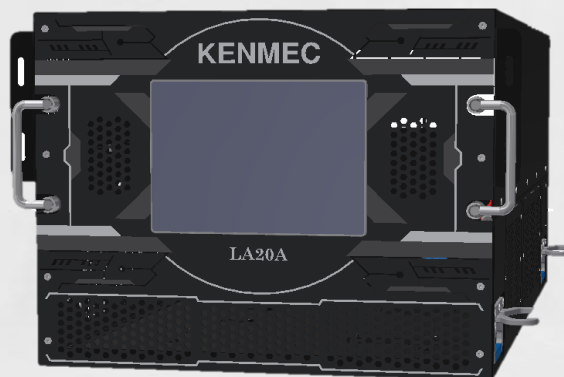
One-Stop Electronic
Manufacturing Services

➤ Product Series and Technical Specifications

Comprehensive Product Portfolio — Meeting Various Scale Requirements

Category	Model	Cooling Capacity	Features & Applications
In-Rack CDU	20KW / 250 kW	Up to 250kW	8U/4U design, automatic water refill, supports remote monitoring and control. Suitable for server edge nodes.
In-Row CDU	80KW / 1400KW / 2500 kW	Up to 2500kW	Chiller-free operation, supports Redfish/IPMI remote management. Ideal for large data centers.
Rear Door Liquid Cooling	LX600T	10~40KW	CDU-controlled sealed loop, compliant with ASHRAE W4, saves 20~30% energy.
Immersion Cooling	Two-Phase Immersion System	PUE < 1.05	No active heat dissipation components, modular design, uninterrupted operation, high energy efficiency.

20kW In-Rack Liquid Cooling CDU



1. Newly upgraded, with a maximum cooling capacity of 20kW.
2. Built-in filter design ensures the purity of the internal coolant.
3. Unique large 7-inch touch LCD display.
4. Integrated control system supports remote monitoring.
5. 8U height, with built-in automatic refill pump and low liquid level alarm.
6. Chiller-free operation, runs independently for heat dissipation.
7. Added handles for easier installation and maintenance, improving efficiency.

250kW In-Rack Liquid Cooling CDU



1. Auxiliary refill design enables continuous flow and operation without shutdown for maintenance.
2. Integrated control system supports remote monitoring.
3. 4U height, with built-in automatic coolant refill and low liquid level alarm.
4. Maximum cooling capacity up to 250KW.
5. Uses variable flow for precise temperature control, compliant with ASHRAE W4 (45°C) warm water cooling.



80kW In-Row Liquid Cooling CDU — Sidecar

1. No need for an external chiller; operates independently. ORV3 height, dimensions: 600(W) × 2300(H) × 1200(D) mm
2. High-density water-cooling solution for optimal server rack heat dissipation
3. Cooling capacity of 80KW, ATD15Designed for GB200 NVL36 heat dissipation, manufactured in Taiwan
4. Supports Modbus, RJ45 for remote data transmission and monitoring



1400kW & 2500kW In-Row Liquid Cooling CDU

1. High 42U design, providing a more competitive footprint
2. Leak-proof and fully enclosed piping system
3. Stainless steel water tank with a user-friendly operation system
4. Supports continuous operation without downtime for maintenance
5. Designed to meet GB200/300 heat dissipation requirements1400KW unit can cool up to eight GB200/300 servers
6. Supports remote monitoring and Redfish functionality



Two-Phase Immersion Cooling

1. Immersion cooling technology with two-phase change for optimal heat dissipation.
2. No need for additional active cooling components such as heat sinks, heat pipes, or fans.
3. Significantly improves energy efficiency with a PUE value < 1.05 .
4. Enhances cost-effectiveness for mass production with a lightweight tank design.
5. Each server has an independent modular tank design, allowing maintenance without shutdown and minimizing fluid leakage.
6. Increases heat dissipation capacity per unit volume for high-power servers.
7. Optimizes condensation capability, reduces pressure loss and power consumption, and improves energy-saving performance.

>> Application Fields and Total Solutions

01

IDC Data
Centers



02

Energy Storage
Industry



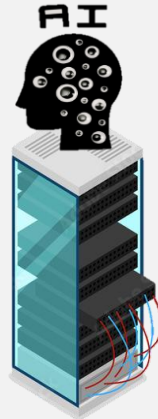
03

5G Network
Communications
Industry



04

Server Electronics
Industry



05

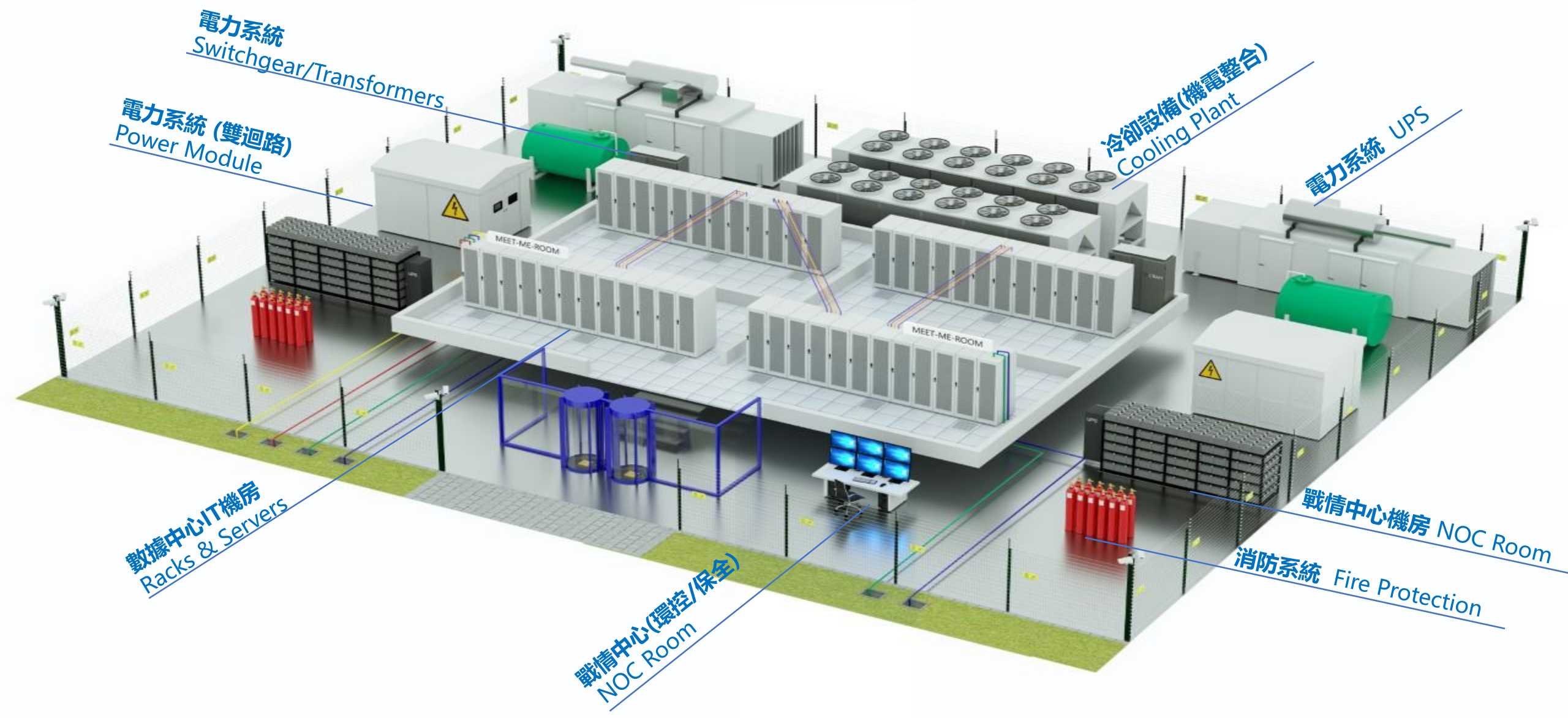
Electric Vehicle
Industry



**One-Stop
Integrated Services**

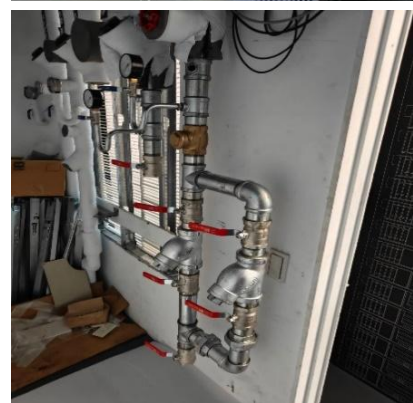
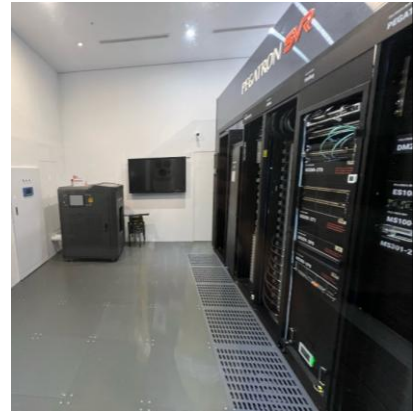
- From data center design, power and cooling planning, simulation and modeling, construction and implementation, to ongoing operation and maintenance.
- Integrated with the NVIDIA Omniverse platform for virtual twin simulation to enhance construction efficiency and reduce costs.

>> What KENTEC do in Data Center



TAIWAN Project References

- GB200 Showroom



PEGATRON **SVR**



Charging Pile Module

EV Charger Series



All products undergoing VPC certification



AC 7/11/22 KW
Charger
Type1/2

AC Chargers



DC 180/360
KW Charger
CCS1/2

DC Standalone
Chargers



DC 720 KW Charger
9 guns (1 ultra-fast + 8 standard)
Air-cooled : 180 / 250 CCS1/2
Liquid-cooled : 450 / 600 CCS1/2

Distributed Chargers



CCS2 350A
Air-cooled
Connector



CCS1 600A
Liquid-cooled
Connector

Charging Cables
& Connectors

DC 360KW Dual-Gun Integrated Charger



Stylish Design & Ad Display

Sleek look with 42" screen for real-time info and ads

Dual Standard Support

CCS1/CCS2 compatible, air-cooled 350A, liquid-cooled 600A

Outdoor Durability

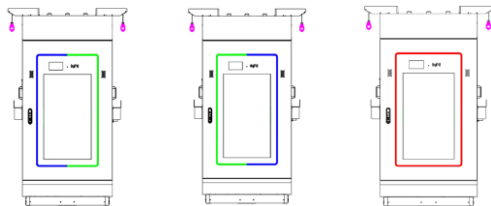
Waterproof, dustproof, and noise reduction design

All-in-One Construction

Simplified installation and easy maintenance

User-Friendly Interface

LED status lights, 7" touchscreen, RFID, mobile app control



KENMEC MECHANICAL

Empowering Automation, Transforming the Future.

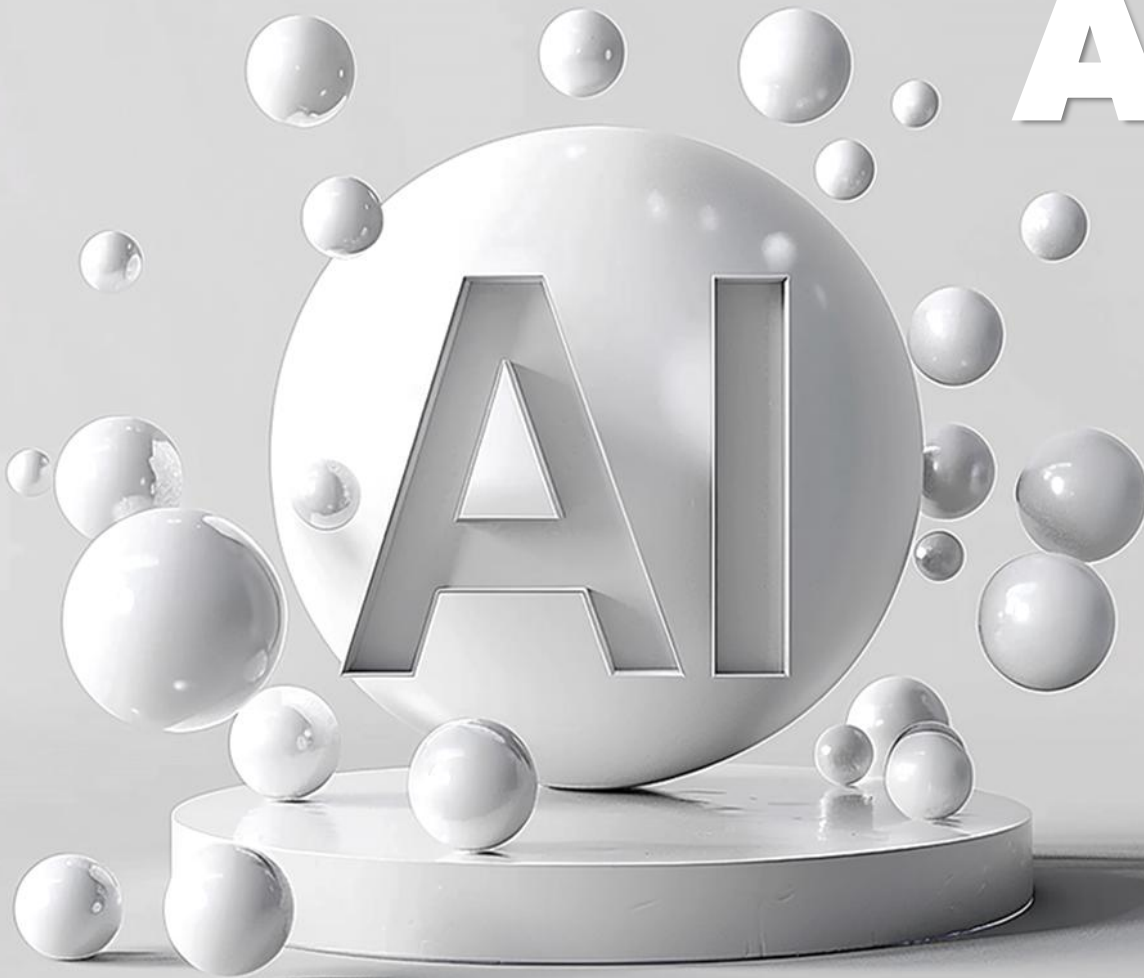
Services & Applications

Kenmec offers an AI-driven platform for innovative manufacturing and logistics applications.

We integrate cutting-edge technologies – AI algorithms, IoT sensors, digital twins, and visual recognition – to empower businesses with: :

- Smart Planning & AI Automation
- Digital Twin & Platform Capabilities
- Custom AI Model Deployment Services

Our AI-centric approach drives operational efficiency and transformative growth.



Omniverse Application Areas



- **Product Design Validation :**
Import CAD models into Omniverse to simulate real-world conditions—such as impacts and vibrations—for early-stage performance validation.
- **Smart Factory Planning :**
Build digital twins to simulate production lines, logistics, and manpower flow. Optimize layouts and workflows virtually, minimizing trial-and-error costs.
- **Robotic Arm and Robot Development :**
Simulate robot behavior and task learning in a virtual environment to accelerate design iteration and improve deployment readiness.

Physical AI Will Transform \$50 Trillion Industries

15 Billion

Commercial Cameras

10 Million

Factories

200K

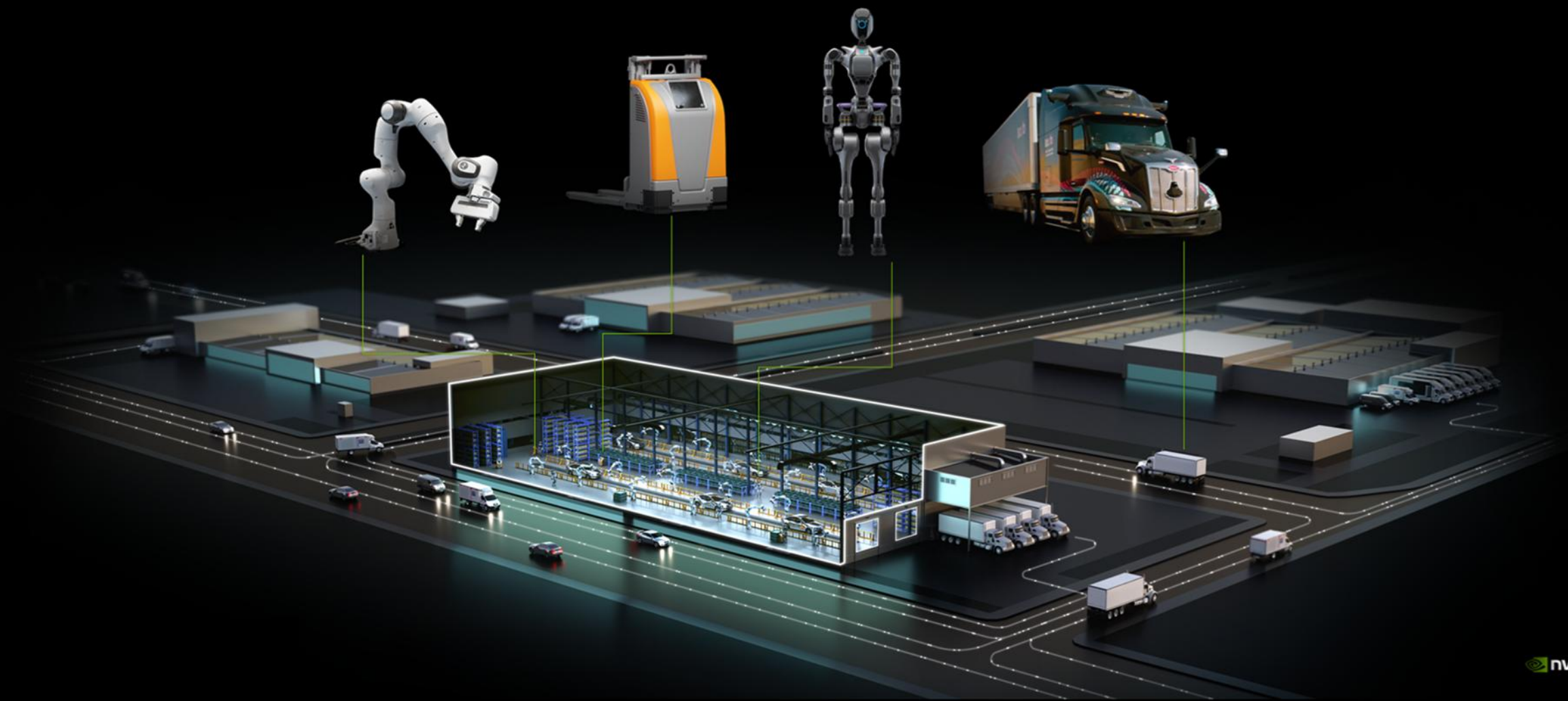
Warehouses

1.5 Billion

Cars & Trucks

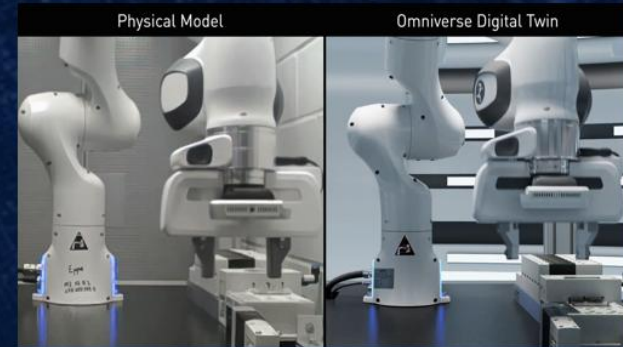
Future Billion

Humanoid Robots



« AI & Robotics Testbed »

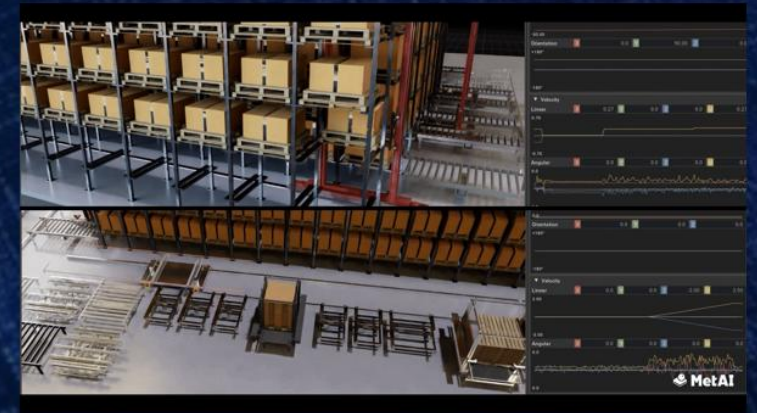
*“ Virtual factories are helping manufacturers unlock new possibilities, from **planning** to **operations**. ” - NVIDIA*



In simulations: lower cost, less time, reduced risk, and greater opportunities.

« Virtual Reality, Real Impact »

SimReady Digital Twins: Accurate simulations of the physical and automated world, empowering AI training and validation.

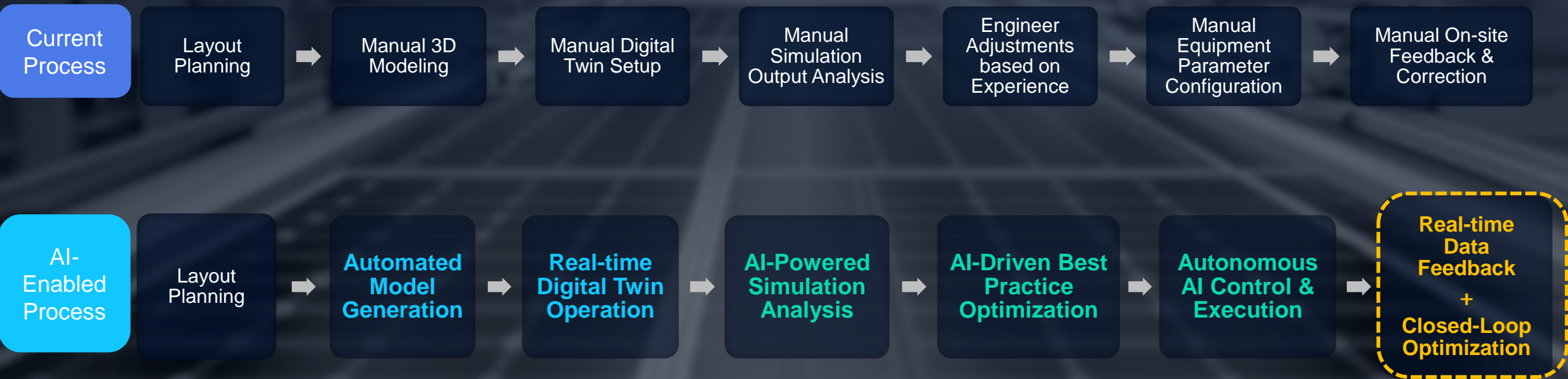


Engineering Process Integration Comparison

(Current vs. AI-Enabled)

Real-to-Sim

Sim-to-Real





Advancing Semiconductor Production

Integrated Simulation with Advanced Technologies

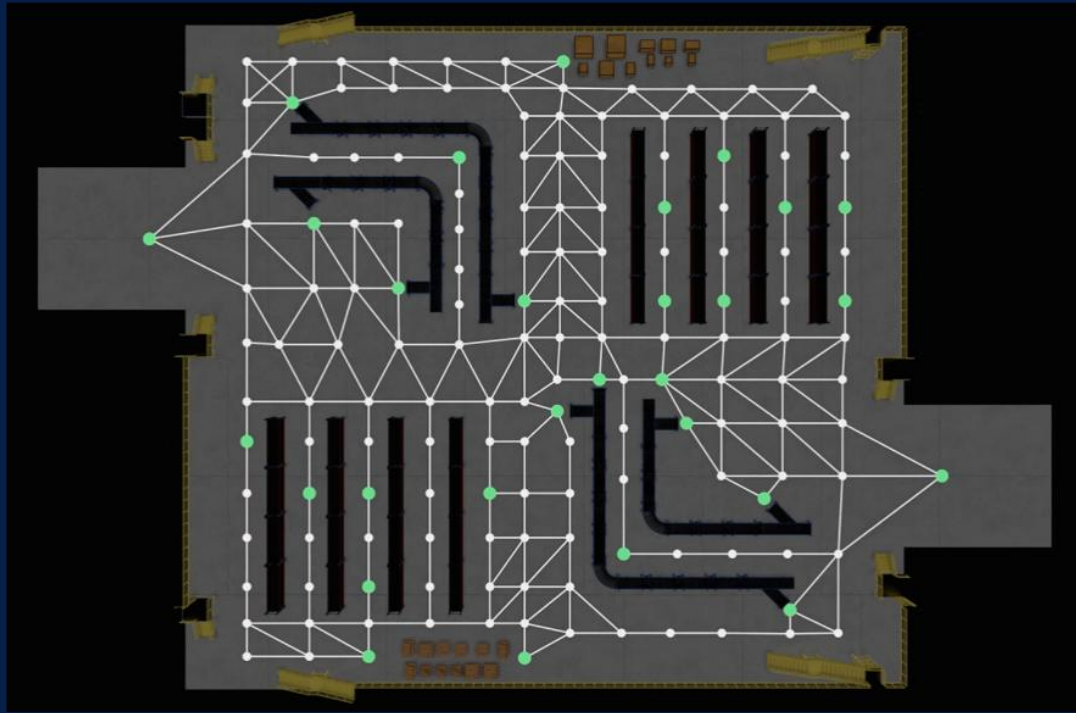


Features

- Develop OHT Training Environments: Simulate Automated Overhead Hoists (OHTs) in Omniverse.
- Leverage Big Data for Deep Learning AI Training to Discover Optimal Solutions.

Unlocking Smart Application Potential: Sim-to-Real Powered by AI & Deep Learning

Example: Training AI-Driven AMR/AMHS Fleet Management Systems via Simulation.



Optimized Space
Utilization

+

Optimal Path Planning

+

Time-Efficient Task
Scheduling

+

Integrated Real-World
Equipment Logic

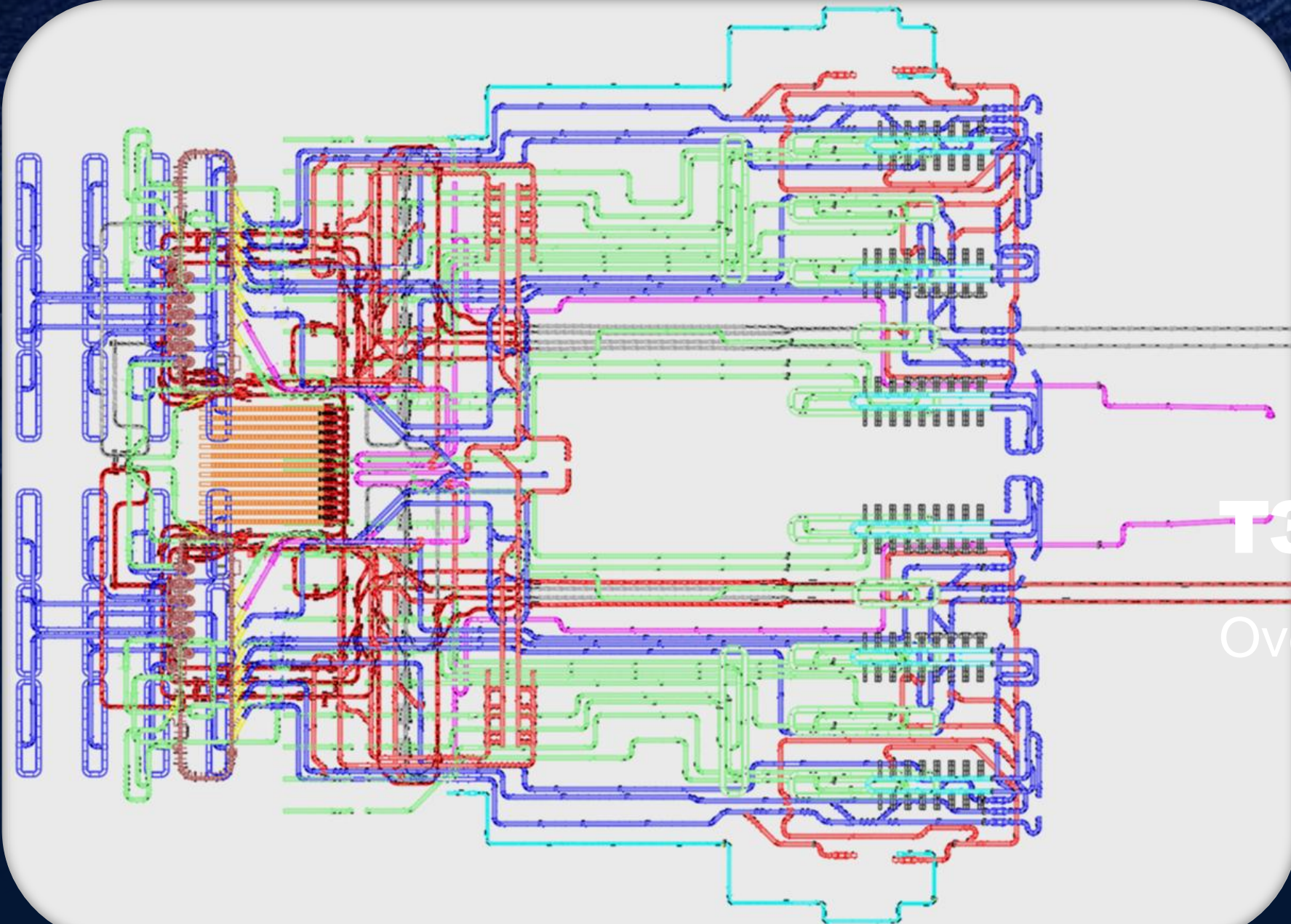
=

Validated Best Practices from Simulation



KENMEC 廣運
— AUTOMATION TECHNOLOGY —

T3 Terminal Baggage Handling Procedure



T3 Terminal
Overhead View

Jetson Thor



Features

1. The AI Supercomputer for Humanoid Robots.
2. Next-Gen Compact Design: Ideal for seamless robot integration.
3. Powerful AI Compute: Unleashing high robot autonomy and intelligence.
4. Multi-Modal Generative AI: For more natural human-robot interaction.
5. Applications :
 - **Humanoid Robots** : Home Services, Industrial Production, Healthcare
 - **Autonomous Mobile Robots** : Delivery, Logistics, Warehousing
 - **Other AI Applications** : Autonomous Driving, Smart Cities

KENMEC 廣運
— AUTOMATION TECHNOLOGY —



NEURA
ROBOTICS

MAV[®]

Multi-Sensing
Autonomous Vehicle

LARA

Lightweight Agile
Robotic Assistant

MAiRA[®]

Multi-Sensing intelligent
Robotic Assistant

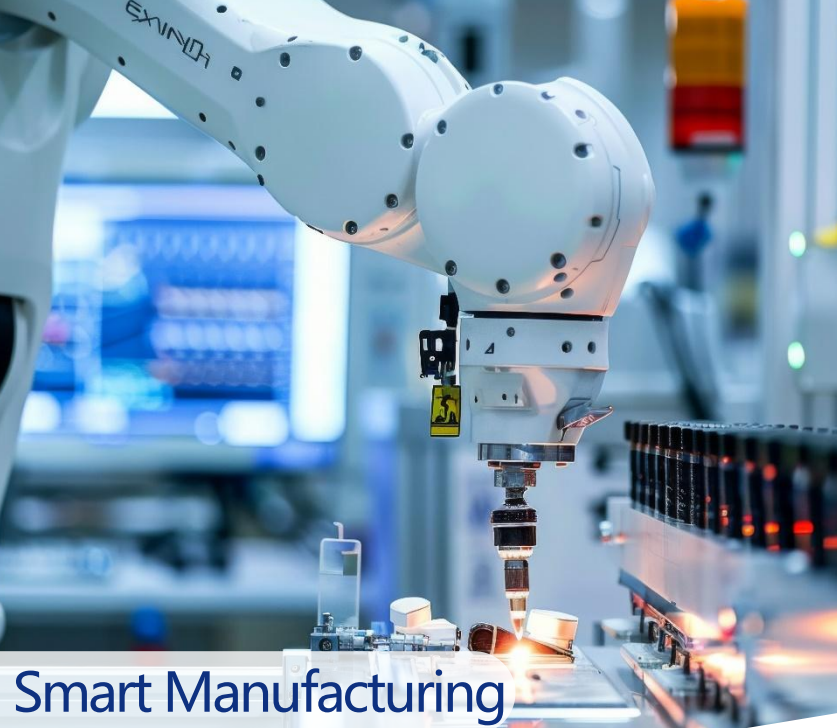
MiPA

My intelligent
Personal Assistant

4IN1

The robot for all
areas of life





Smart Manufacturing



Smart Logistics



Public Engineering



AMR/AGF



SiC Crystal Growth Equipment
& Business Opportunities



Intelligence War
Room

AMR / AGV



Autonomous Mobile Robot (AMR)



全系列AMR無人搬運車

火蟻 | 堆高車系列 FA 拖板式

2.0 T - 6.0 T

拖板堆垛式

1.0 T - 2.0 T

平衡重式

1.5 T - 5.0 T

前移式

1.5 T - 3.0 T

全向 / 四向式

1.5 T - 3.5 T

三向堆垛式

1.2 T - 1.6 T

牽引式

3.0 T - 4.0 T

客製化車體

3.0 T - 25 T

工蟻 | 搬運車系列 WA

50 KG - 600 KG

兵蟻 | 巡檢車系列 SA

200 KG - 1.5 T

OHT

(Overhead Hoist Transfer)



1. Effectively utilize ceiling and space above machines to maximize the usage rate of cleanroom interior space.
2. Design the conveying distance and track path according to the space within the factory.
3. Use 5G wireless transmission technology for system integration to meet the systematic, data-driven, and intelligent transportation needs of the cleanroom.

Design Advantages

- High Performance: Enhanced speed, lateral transfer, and stability.
- High Versatility: Compatibility with 6", 8", and 12" wafers.
- High Applicability: Suitable for new factories, renovation of old factories, low ceilings, and rotating grippers.
- Point-to-Point: High-speed automated material transfer function from machine to machine.
- Monitoring and Control: Supervision of material flow across the entire factory, automatic vehicle dispatch, and collection of production information.
- Efficiency Boost: Significantly increases equipment utilization rate, optimizes cleanroom space usage, reduces work-in-progress turnover time, lowers human error, and enhances factory efficiency.



Safety Protection Device

Equipped with the following sensors to ensure the safety of personnel and transported products:

1. **Distance Sensor:** Prevents collisions with the preceding vehicle.
2. **Front View Sensor:** Prevents collisions with objects or people.
3. **Downward View Sensor:** Prevents collisions with objects during hoisting.
4. **Collision Sensor:** Detects physical collisions and stops the vehicle.
5. **Wafer Box Drop Detection Sensor:**
 - Detects if the wafer box falls during transport.
 - The wafer box is supported by the basket.
6. **Swing Sensor:** Detects the swing of the gripper during lifting and stopping.
7. **Brake Sensor:**
 - Detects the level of the gripper.
 - Detects belt tension.
8. **Loading Port Status Monitoring Camera (Optional):**
 - Used for non-E84 equipment loading/unloading.

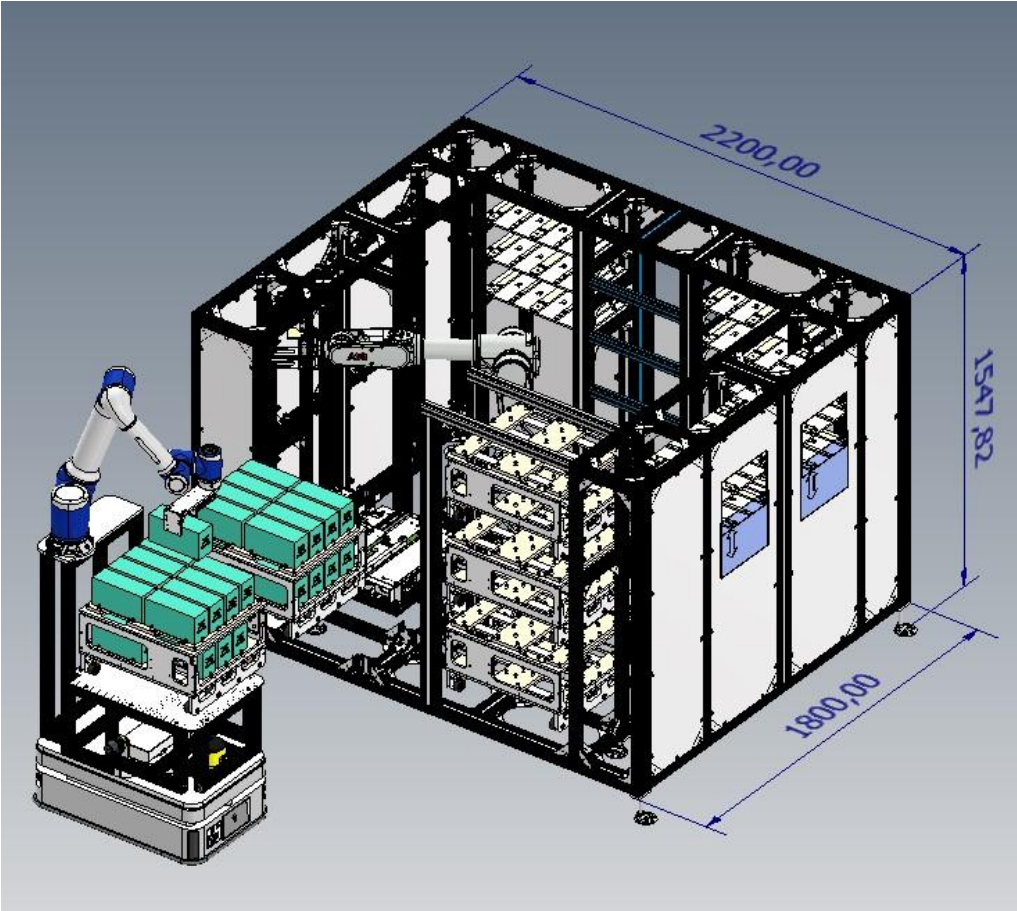
AMR (for Moving Rack)

- CobotAMR Load



Specification	CobotAmr400
Overall Dimensions (L*W*H) (mm)	841 x 540 x 1873
Product Weight (kg)	250
Rated Load Capacity of Chassis (kg)	400
Turning Diameter (mm)	1150
Rated Load Capacity of Robotic Arm (kg)	18
Maximum Effective Operating Radius (mm)	1073
Maximum Operating Speed (m/s)	1.2
Stopping Precision (mm)	±10 ・ 對接±2
Battery Capacity (Ah)	31.5
Rated Operating Time (H)	8
Charging Time (H)	1.5
Certification and Cleanroom Class	SEMI S2 + Class 100
Number of Transportable Magazines	16

E-Stocker



- **Dimensions:** 2200 x 1800 x 1548 mm
- **Number of Levels:** 7 levels (customizable based on floor height)
- **Height per Level:** 170 mm
- **Storage per Level:** 32 Magazines
- **Total Storage Capacity:** Approximately 200 Magazines
- **Arm Type (SCARA or 6-axis):** Load Capacity 15 kg
- N2 Sealed with humidity control



Core Advantages

1. **Decades of Precision Automation Expertise:** 50 years of deep experience providing robust and reliable automation solutions for diverse industrial needs.
2. **Comprehensive Integration Capabilities:** From advanced semiconductor equipment to specialized logistics solutions, we offer full-spectrum automation integration services to boost client production efficiency.
3. **Global Service Network:** Strategic service hubs in Taiwan, China, Vietnam, and Thailand establish a flexible and efficient global support system for timely client assistance.
4. **Cutting-Edge Technology Driven:** Continuous R&D investment integrates advanced technologies like AI and Omniverse into engineering design, significantly enhancing client manufacturing efficiency and competitiveness.
5. **Customized Solutions Expert:** We provide end-to-end customized services, from initial design to after-sales support, ensuring successful project implementation and continuous optimization.
6. **Operational Excellence & Cost Efficiency:** Committed to improving client operational efficiency and product quality while reducing costs, ensuring exceptional return on investment.

2025年

KENMEC 廣運
—AUTOMATION TECHNOLOGY—

自動化工業展 Automation Taipei

AUG 20-23

地點 | 南港展覽館一館4F N814

KENMEC



預約參觀
Pre-registration

Empowering Automation, Transforming the Future.

Copyright© 2025 KENMEC Group. All rights reserved.

